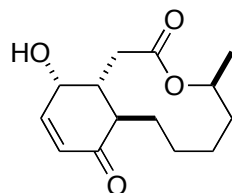


(+)-Sch 642305 (TKGP-191005)

K. Ishigami, H. Watanabe¹⁾

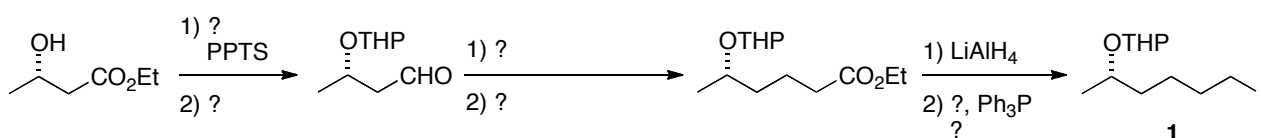


Activity

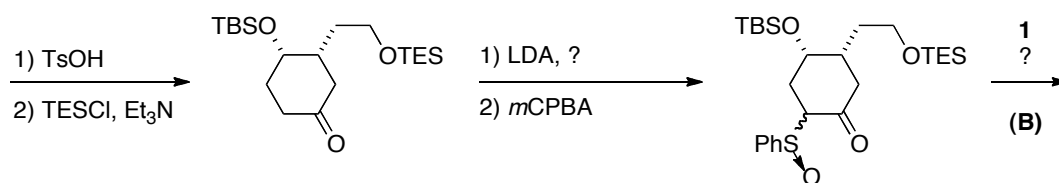
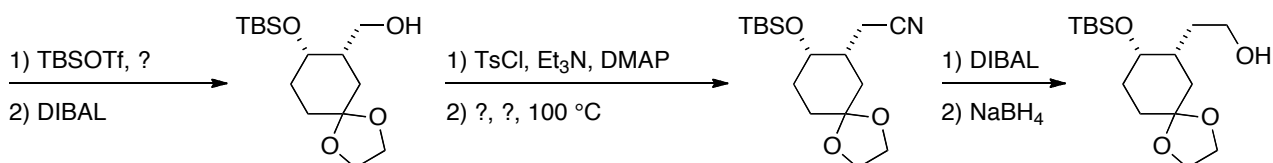
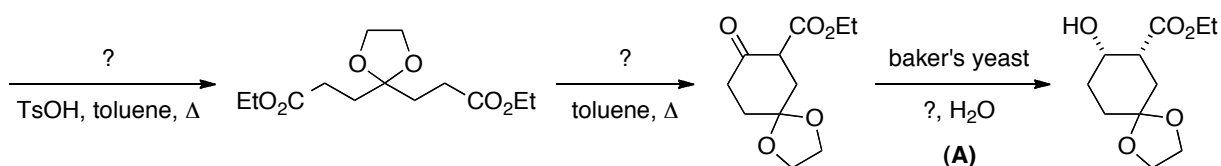
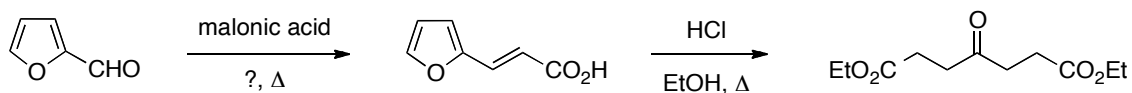
Bacterial DNA primase Inhibitor (バクテリアの DNA プライマーゼ阻害剤)

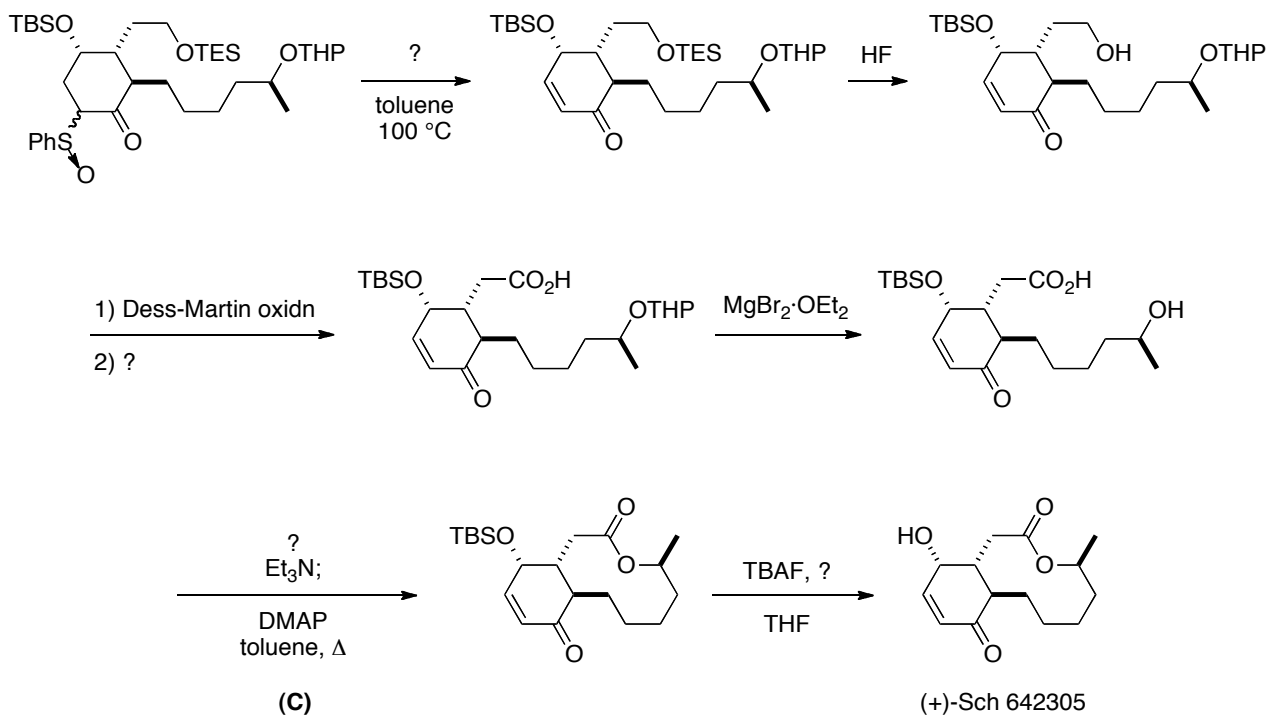
Key Reactions

(A) stereoselective reduction by baker's yeast,
(B) dianion alkylation of β -ketosulfoxide, (C) Yamaguchi's lactonization



###





Reference:

- 1) K. Ishigami, R. Katsuta, H. Watanabe, *Tetrahedron*, **62**, 2224 (2006)