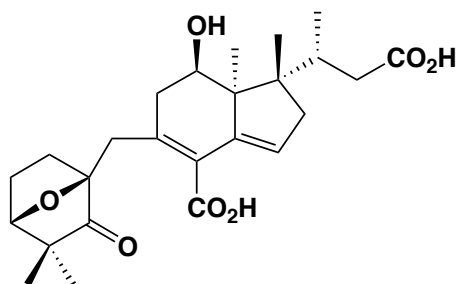


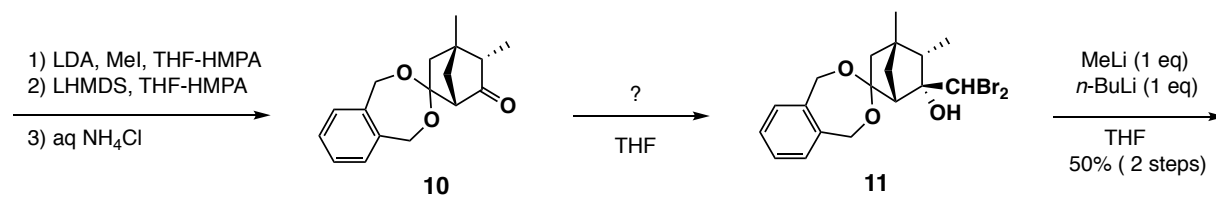
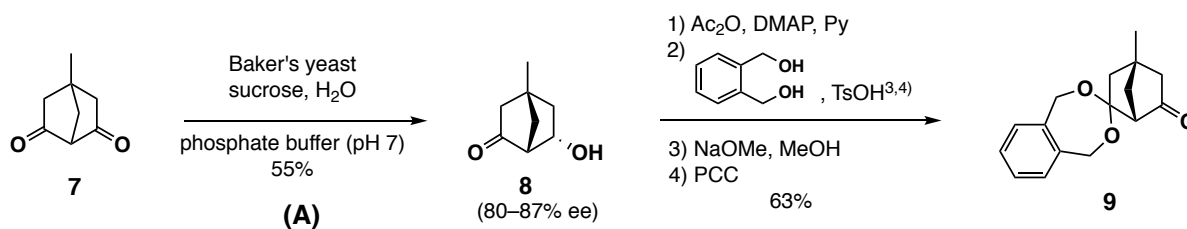
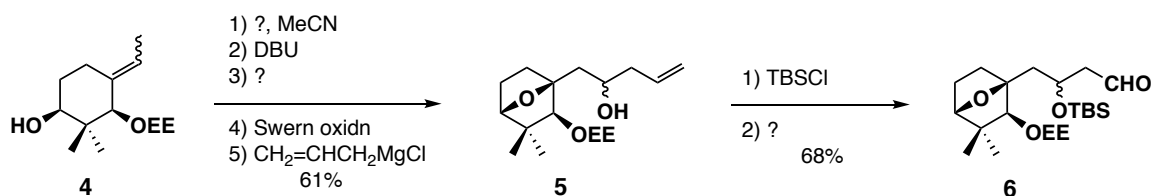
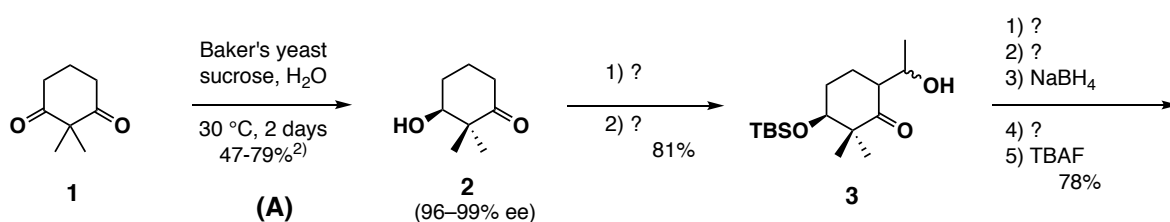
(-)-Glycinoeclepin A (TKGP-190202)

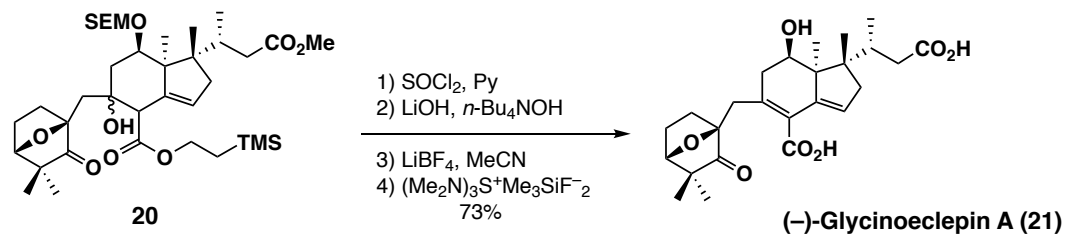
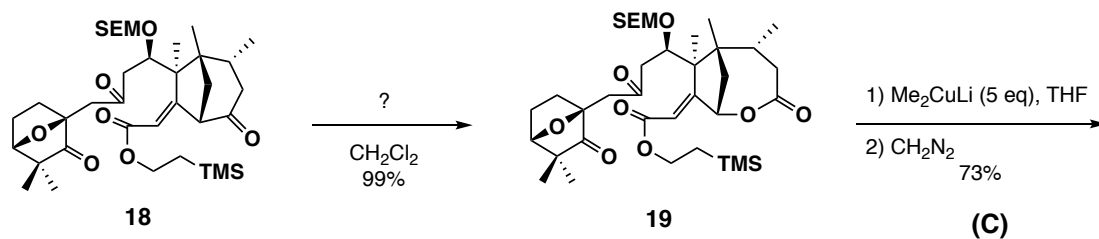
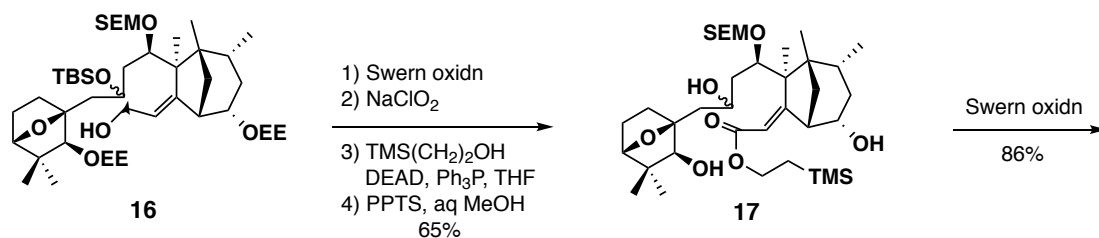
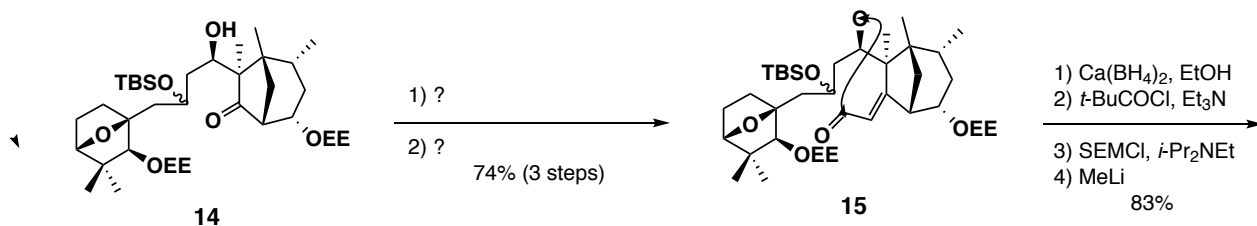
Kenji Mori¹⁾



Activities: Hatching stimulus for the soybean cyst nematode (*Heteropdera glycines*)

Key Reactions: A) Reduction with baker's yeast B) Aldol condensation
C) Tandem reduction-aldol condensation





- References: 1) Watanabe, H.; Mori, K. *J. Chem. Soc., Perkin Trans. 1* **1991**, 2919.
 2) Mori, K.; Mori, H. *Org. Synth. Coll. Vol.* **1993**, 8, 312.
 3) Grewe, R.; Struve, A. *Chem. Ber.* **1963**, 96, 2819.
 4) Mori, K.; Yoshimura, T.; Sugai, T. *Liebigs Ann. Chem.* **1988**, 899.